



+ **Dalbo®-System.**
On implants and roots.
Robust and ingenious.

Dalbo®-System – From original to system

The ball anchor is the most widely used anchoring method worldwide. Cendres+Métaux SA is the leading supplier of prefabricated precision attachments for prosthetics. The original Cendres+Métaux Dalbo® ball anchor has been perfected and developed to become the ingenious Dalbo®-System.

This brochure provides an overview of the Dalbo®-System, its application and advantages.

More detailed information can be obtained from your local Cendres+Métaux representative or from Cendres+Métaux Switzerland.

Dalbo® ball anchors on 2 implants

Brief description of the case (Case 1, fig. 1–3)

An implant-borne removable full denture is an alternative for treatment of the edentulous jaw. A group of scientific and clinical experts met at the McGill University (Montreal, Canada) to draw up a consensus report.

Case 1: Dalbo®-PLUS



Fig. 1



Fig. 2



Fig. 3

Fig. 1–3 Treatment carried out by:
 Christophe Rignon-Bret (DCD, MS, PhD, Associate Professor),
 Jean-Marie Rignon-Bret (DCD, DSO, DEO, Professor, Head of
 Prosthetic Department), René Descartes University, Paris 5, France.

The following fact was recorded in the report: a removable full denture supported on two implants is currently the preferred treatment option for the edentulous jaw. This treatment concept is not only reliable but also very cost-effective.

Dalbo® ball anchors on 2 root caps

Brief description of the case (Case 2, fig. 4)

Two root caps with Dalbo® ball anchors represent a standard application and a simple method of retaining an overdenture.

Dalbo®-Rotex®

Brief description of the case (Case 3, fig. 5–6)

Endodontic Dalbo®-Rotex® anchors for temporary retention of removable temporary dentures or as economy permanent attachments to retain simple overdentures.

Case 2: Dalbo®-ball and socket unit (Fig. 4)



Case 3: Dalbo®-Rotex®



Fig. 5



Fig. 6

Fig. 4–6 Photographs provided by:
 Ch. E. Besimo, Prof. Dr med. dent.
 Department of Dentistry, Aesculap Hospital, Brunnen, Switzerland

Dalbo® ball anchor on 1 implant

Brief description of the case (Case 4, fig. 1–4)

A 74-year-old female patient wanted the retention of her lower full denture improved. She had no problems with her full upper denture.

As the options were very restricted financially, only one implant was placed in the region of the symphysis. Financial restrictions also precluded the fabrication of a new denture. The lower denture as well as the intermaxillary relationship and occlusion of the dentures were also acceptable. After osseointegration, the implant was equipped with a prefabricated spherical anchor. The secondary unit was integrated into the existing lower denture under masticatory pressure.

This considerably improved the retention of the denture. The patient has now been wearing the denture for 3 years and has not requested any further adjustments.

Case 4: Dalbo® Ball Anchor on 1 implant



Fig. 1



Fig. 2

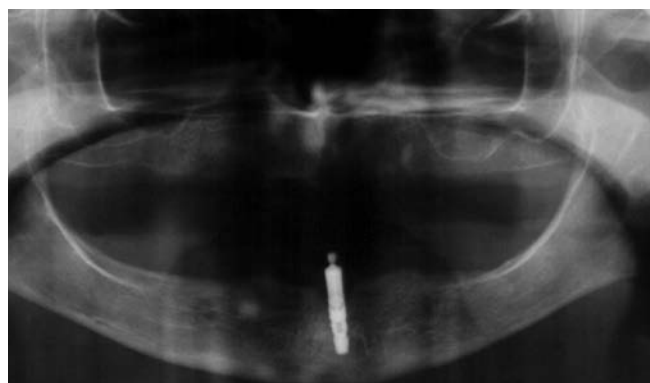


Fig. 3



Fig. 4

Fig. 1–4 Treatment carried out by:
Prof. Dr. J. Setz, Department of Dental Prosthetics,
Martin Luther University, Halle-Wittenberg, Germany

Dalbo® ball anchor on 1 root cap

Brief description of the case (Case 5, fig. 5)

A root cap with a Dalbo® ball anchor on a residual abutment tooth provided a simple option to improve the retention of the denture.

In this case the denture-related mucosal irritation visible in several areas illustrates a possible problem with this type of prosthetic restoration. Treatment options, such as a full denture, increasing the amount of abutments by placing an implant in the opposite canine region or a fully implant-borne denture, should therefore be taken into consideration depending on the anatomical and functional conditions as well as patient requirements.

Case 5: Dalbo® Ball Anchor on 1 Root Cap

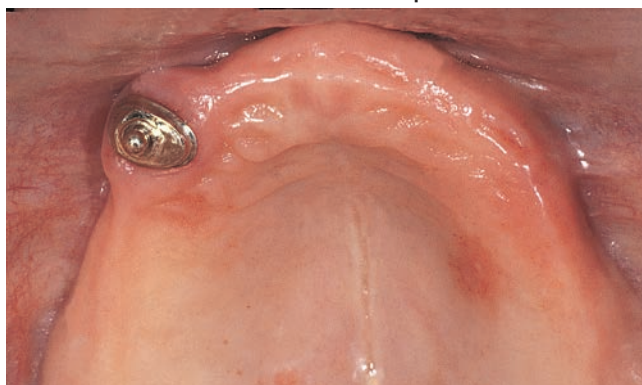


Fig. 5

Fig. 5 Photographs provided by:
Ch. E. Besimo, Prof. Dr med. dent.
Department of Dentistry, Aesculap Hospital, Brunnen, Switzerland

Implants with Dalbo® ball anchors replacing critical, missing abutment teeth

Brief description of the concept (Case 6 + 7)

Since 1997 an increasing number of older patients with only a few residual teeth have been treated with implants. The primary function of these implants is as strategic abutments for stabilising a removable denture. This concept of implantological, prosthetic

treatment has been largely ignored till now: one-tooth restorations, free-end saddles and edentulous jaws have been the main focus of implant treatment.

As there is no standard classification for the residual dentition, the use of implants in these cases is illustrated with two examples. To date 27 patients have been fitted with 42 implants and only one implant has failed.

Case 6



Fig. 1



Fig. 2



Fig. 3

Case 7



Fig. 1



Fig. 2



Fig. 3



Fig. 4

Treatment carried out by:
 Prof. Dr Dipl.-Ing. E.-J. Richter, Head of Dental Prosthetics,
 University Hospital, Würzburg, Germany

Dalbo®-PLUS elliptic ball anchors on 4 implants, a removable bridge restoration

Brief description (Case 8, fig. 1–8)

A 62-year-old female patient came to us because she was dissatisfied with the retention and function of her upper full denture, as she still had a complete dental arch in the opposing jaw. The patient also complained of a gagging reflex due to the palatal coverage of the denture; though this was not serious, it could not be ignored.

Following implantation, osseointegration and exposure of four implants, a superstructure design was selected based on removable restorations on tapered crowns; the design was very similar to that of a fixed bridge restoration. As the design was very hygienic, the restoration only needed to be operator-removable. The restoration has been in situ for two years and the patient is extremely satisfied with it.

Case 8



Fig. 1



Fig. 2



Fig. 5



Fig. 3



Fig. 6



Fig. 4



Fig. 7



Fig. 8

Treatment carried out by:

Prof. Dr Michael Heners (†), Berthold Steiner,
Master Dental Technician
Dental Training College, Karlsruhe, Germany

Dalbo®-System – Advantages	
What are the advantages of the Dalbo®-System compared with other types of anchors?	
1. Reliability and durability	The compact spherical shape is highly resistant. The special precious metal lamellar design ensures reliable, durable functioning. The functioning principle has been in use for over 40 years and has proven its effectiveness in millions of cases. Patients questioned describe having a «feeling of security».
2. Simplicity	The Dalbo®-System is easy to use for the practice and laboratory and requires minimum servicing. The retention force is accurately set to suit each patient directly in the dental practice.
3. Universal use	The system components have been optimised for the relevant application. Minimum space is required when integrating them into the denture. There is now a spherical male part with a special base for laser welding.
4. Compatibility	All female parts of the Dalbo®-System fit the spherical male parts of other manufacturers and spherical ball attachments (Ø 2.25 mm) on implants ¹ . We recommend the use of the special Dalbo®-PLUS and Dalbo®-PLUS elliptic female parts for the renewal of older restorations and with ball attachments from other manufacturers.
¹ e.g. Straumann, Brånemark System®, OsseoTite NT®, SPI® System, Astra Tech Implants, Camlog® and other implant systems	

The Challenge: Durable function

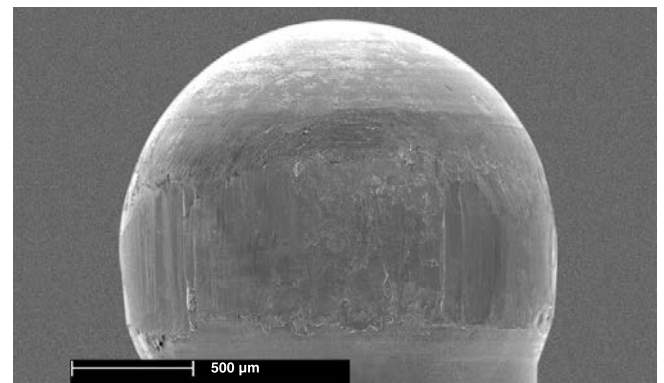
Spherical anchors allow movement of the denture on the denture-bearing tissue. According to various authors there can be more than 2 million masticatory movements per year.

Tests and clinical experience indicate that not all modern materials or anchor designs can withstand this enormous loading without damage. Female parts fabricated from plastic or those with plastic inserts sometimes exhibit extreme wear of the male part caused by substances that have become deposited in the plastic. Plaque tends to build up on plastic inserts and can be very abrasive.

A study by the University of Kiel, Germany, proved that female parts with an integrated, hard spring ring damage the male part equator to the extent that there is an irreparable, massive loss of denture retention. The majority of springs also fractured when loaded. Another of the latest generation of attachments with special plastic inserts initially exhibited very different and sometimes non-physiological withdrawal forces, which decreased considerably after 50,000 cycles².



Damage caused by a plastic female part:
Irreparable damage to the male part caused by a build-up of substances in the plastic



Damage caused by a female part with a spring unit:
Considerable damage to the male part caused by the spring at the sphere equator

² Ludwig K.; Kern M.; Hartfil H.:
Wear and tear of anchors with 50,000 fitting-withdrawal cycles in a water bath and eccentric end loading, 01.2004

Solution:**The Dalbo®-System with precious metal lamellae**

The Dalbo®-System uses a principle, which in comparison with other systems reduces the effects of wear and tear to a minimum.

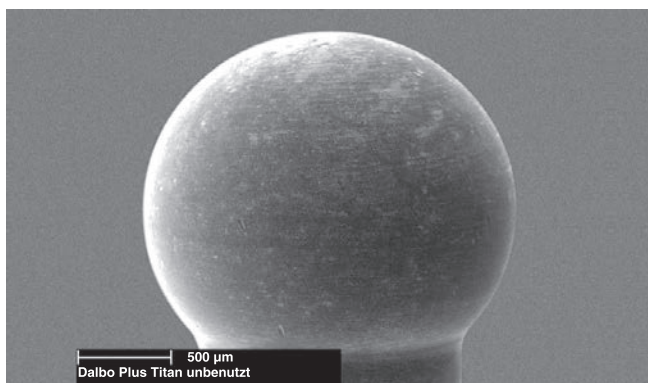
Every female part has flexible precious metal lamellae. These special lamellae prevent the build-up of abrasive plaque and tooth-paste. When fitting the denture, the flexible lamellae open and slide smoothly over the spherical male part without damaging it.

Decades of experience as well as extensive internal and external tests on the effects of wear and tear have shown that **there is for example virtually no wear after 50,000 fitting and withdrawal cycles²: 100N were used as eccentric end loading to simulate loading during functional masticatory movements.**

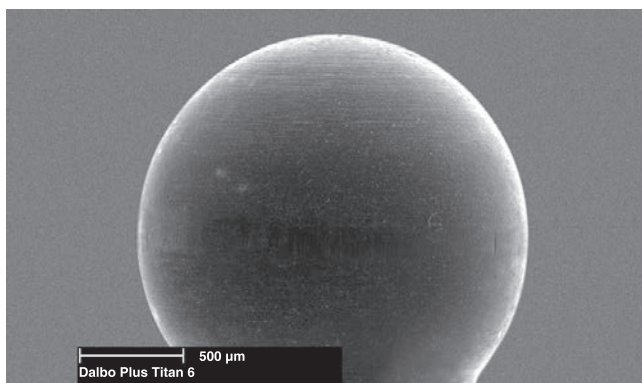
These results ensure **durable denture retention, minimum servicing and greater satisfaction for your patients.**

Improve existing restorations with Dalbo®-PLUS female parts

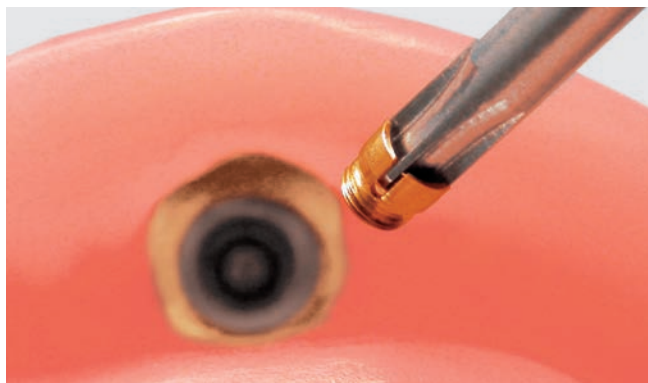
Older, existing restorations with worn spherical anchors from any manufacturer can be easily improved. **Dalbo®-PLUS female parts (incl. elliptic version) can be fitted with different lamellae inserts to spheres with extensive wear to restore the retention.** These components are inserted very easily and quickly. The screwdriver/activator is used for easy, durable fine adjustment of the denture retention.



Straumann spherical titanium abutments before wear and tear



Straumann spherical titanium abutments after wear and tear



Easy replacement



Inserted – Activated – Ready

² Ludwig K.; Kern M.; Hartfil H.:

Wear and tear of anchors with 50,000 fitting-withdrawal cycles in a water bath and eccentric end loading, 01.2004

The Dalbo®-System – Applications and Advantages of the Components

All the female parts shown here are based on the \varnothing 2.25 male part. An overview of the different combinations as well as the Order Nbrs. can be found on the next double page.

Dalbo®-B



The original

The original shape of ball anchor for over 40 years. Robust design, durable, tested and proven. Height of the female part 3.1 mm.

Entirely made out of precious metal. The flexible lamellae, which can be activated, ensure durable denture retention.

A spherical male part with a special base is available for laser welding. This component can also be soldered conventionally.

Dalbo®-PLUS and Dalbo®-PLUS elliptic



The high-end and comfortable model. Height of the female part 3.1 mm.

Titanium female part with threaded precious metal lamellae insert allowing the retention force to be finely, permanently and instantly adjusted with a screwdriver. Tuning female part with a reduced inner diameter for integration into an existing denture which can be used with worn spherical anchors of other manufacturers.

This enables the retention of existing dentures to be improved.

The elliptic version provides increased retention in the denture acrylic and is especially recommended for use with implants.

Dalbo®-Classic and Dalbo®-Classic elliptic



Cendres+Métaux ball anchor requiring the least space

The height of the female part is only 2.2 mm. One-piece precious metal female part.

The flexible lamellae, which can be activated, ensure durable denture retention.

The elliptic version provides increased retention in the denture acrylic and is especially recommended for use with implants.

Dalbo®-PLUS female part and Dalbo® Abutment



Ball abutments on implants

Dalbo® Abutment solutions are available on all major implant systems like:

- Straumann®
- Astra Tech®
- Nobel Biocare®
- DENTSPLY Ankylos®
- Camlog®
- Osstem®

Compatibility list available online:
www.cmsa.ch/Dental/Download-Center

Dalbo®-Rotex®



A ball anchor with self-tapping root thread to allow direct, immediate involvement of the roots in the retention of the denture.

This method eliminates casting a root cap and fitting a ball anchor. This reduces the cost and the patient benefits from a shorter treatment time. Indicated for roots with indeterminate prognosis, temporary restorations as well as for NHS dentistry and elderly patients. Plastic female parts (Order no. 051 868) are suitable for short-term temporary restorations; metal female parts from the Dalbo®-System are recommended for long-term temporary restorations.

Dalbo® Service-Set for anchors









For intraoral repairs of defective anchors from any manufacturer.

Existing, non-functioning anchors are cut back to the level of the cap. Then a hole is drilled directly into the root cap, a Dalbo® spherical anchor is inserted with the screw thread and cemented. Finally the female part supplied is integrated into the denture. The set contains all the components required for restoring anchorage.

Combination options with the Dalbo®-System

This table provides information about available male/female part combinations as complete units as well as recommended customised combinations.

- 8 Cendres+ Métaux spherical male parts, all with a \varnothing 2.25 mm
- 6 female parts

Female parts		Male parts material	Dalbo®-Classic	Dalbo®-Classic elliptic	Dalbo®-B	Dalbo®-PLUS	Dalbo®-PLUS elliptic	Plastic Galak
			Order No. 055 698	Order No. 055 887	Order No. 051 511	Order No. 055 752	Order No. 055 890	Order No. 051 868
Male parts			 2,2 mm	 2,2 mm	 3,1 mm	 3,1 mm	 3,1 mm	 3,6 mm
Permanent restorations	All standard implant spherical anchors with \varnothing 2,5 mm	various	✓	✓	✓	✓	✓	
	Yellow, for soldering Order No. 050 423	Elitor®	✓	✓	Order No. 050 427	✓	✓	
	Pd-free, white, cast-on Order No. 055 647	Valor®	Order No. 055 689	Order No. 055 892	✓	Order No. 055 750	Order No. 055 889	
	Yellow, for soldering or laser welding Order No. 055 921	Elitor®	✓	✓	✓	✓	✓	
	Cast-on Order No. 055 330	Korak	Order No. 055 701	Order No. 055 893	Order No. 055 331	✓	✓	
	Female part Dalbo®-PLUS and Dalbo® Certain® Abutment	Syntax	✓	✓	✓	Order No. 0500 0449 H 2 mm 0500 0451 H 4 mm 0500 0452 H 6 mm	✓	
Temporary restorations	Dalbo®-Rotex® «Bona», Size 1 Order No. 051 869 Size 2 Order No. 051 870	Pure titanium	✓	✓	✓	✓	✓	Order No. 051 864 Order No. 051 865
	Dalbo®-Rotex® «Brunner», Size 1 Order No. 051 871 Size 2 Order No. 051 872	Pure titanium	✓	✓	✓	✓	✓	Order No. 051 866 Order No. 051 867
Service	Service-Set, for repairs Order No. 052 091 Order No. 052 089	Elitor®	✓	✓	✓	✓	✓	

Legend:

Elitor® = Protor® 3, yellow precious metal alloy

Galak = Orally stable plastic


Korak = non-residual burnout plastic


Pure titanium = Grade 4 pure titanium

Valor® = non-oxidising, Pd and Cu-free, cast-on precious alloy


Order No. = complete anchor (female and male parts)

✓ = only as single units (unlimited combination options)

 = Ideal combination

 = Recommended

 = Recommended for temporary restorations

 = Not recommended

A

- **Assenza B., Occhiuzzi L., Caprotti A.:** Protesi rimovibili a estensione distale su impianti osteointegrati Analisi retrospettiva, Italian Oral Surgery, 2007; vol. 5, 3: 29–35

B

- **Bayer S.:** Hybridprothetische Verankerungselemente im Verschleiss und der klinischen Anwendung. Rheinländisches Zahnärzteblatt (Jg. 48), Heft 4/April 2005
- **Bayer S., Bourauel C., Stark H., Utz K.-H.:** Implantatgetragene hybridprothetische Verankerungselemente im Verschleiss, Posterpräsentation anlässlich der DGZPW/SSRD Tagung in Basel (27.–29. April 2006)
- **Bayer S., Hültenschmidt R., Grüner M., Utz K.-H., Stark H., Bourauel C.:** Simulation und Analyse des Verschleisses von hybridprothetischen Verankerungselementen (Abstract zur Jahrestagung der DGZMK 2003), DZZ Deutsche Zahnärztliche Zeitschrift (11/2003)
- **Besimo Ch.E.:** Prothetische Pfeiler nach Verlust der anatomischen Krone, Quintessenz Zahnmedizin 53, 7, 725–737 (2002)
- **Besimo Ch.E.:** Removable partial Dentures on Osseointegrated Implants. Quintessence, Chicago 1998
- **Besimo Ch.E., Guarneri A.:** In vitro retention force changes of prefabricated attachments for overdentures. J Oral Rehabil 30: 671–678, 2003
- **Besimo Ch.E., Wiehl P., Demartines B.:** Betagte zahnlose Patienten und implantatgetragener Zahnersatz. Implantologie 3: 199–208, 1996
- **Besimo Ch.E., Sigrist M., Jahn M.:** Vergleichende Untersuchung der Haltekraft endodontisch verankerter Kugelattachments bei Verschleissbeanspruchung in vitro. Deutsche Zahnärztliche Zeitschrift 59 (2004) 6, Seite 305–310
- **Burns D.R., Unger J.W., Elswick R.K., Beck D.R.:** Prospective clinical evaluation of mandibular implant overdentures: Part I – retention, stability and tissue response. J Prosthet Dent 73: 354–363, 1995
- **Burns D.R., Unger J.W., Elswick R.K., Giglio J.A.:** Prospective clinical evaluation of mandibular implant overdentures: Part II – patient satisfaction and preference. J Prosthet Dent 73: 364–69, 1995
- **Busch R., Kern M.:** Wiederherstellung der Retention bei dem schraubaktivierbaren Kugelkopfattachment Dalbo®-PLUS. Quintessenz ZM 6/09
- **Büttel A. E.:** In vivo Verschleisserscheinung von Retentionselementen auf Implantaten: eine prospektive, klinische, kontrollierte 1-Jahresstudie. Universität Basel, Jan. 2009

C

- **Cendres & Métaux:** Het Dalbo® kogelanker, een succesverhaal, DENTAL UNION TOUCH 1/2005
- **Cendres & Métaux France SAS:** Dalbo®-PLUS. Ancre supra-radicaire rétentif à résilience, L'information dentaire ADF, novembre 2008 page 52
- **Colier P.:** Dalbo®-PLUS System – szwajcarska precyzja. Nowoczesny Technik Dentystyczny 4/2007
- **Cordioli G., Majzoub Z., Castagna S.:** Mandibular overdenture anchored to single implants: A five-year prospective study, The Journal of Prosthetic Dentistry, August 97, Seite 159–165

G

- **Germanier Ph., Bruna E., Palla S.:** Coiffes radiculaires en résine pour Perio-overdentures, Rev Mens Odontostomatol, Vol 116: 10/2006, Page 1011–1022
- **Germanier Ph., Bruna E., Palla S.:** Komposit-Wurzelkappen für Perio-overdentures, Schweiz Monatsschr Zahnmed, Vol 116 10/2006: Seiten 1023–1028

H

- **Hsu Yung-tsung:** Use of light-polymerized composite resin to stabilize ball attachment during transfer procedures, The Journal of prosthetic dentistry, Volume 94 Number 5, page 470–471
- **Hsu Yung-tsung:** Retention Characteristics of Ball Attachments, University of Alabama 2009

K

- **Keweloh M., Mühlhäuser A.:** Deckprothese bei Alveolarkammatrophy, dental-praxis, XXIII, Heft 5/6-2006, Seite 153–165
- **Keweloh M., Mühlhäuser A.:** Overdentures for Atrophied Alveolar Ridges, Spectrum Dialogue Vol.8 No.5 May 09
- **Keweloh M., Mühlhäuser A.:** Prothèses amovibles dans les cas de crêtes alvéolaires atrophiées, Spectrum Quebec Vol.6 No.2 Été 2009
- **Kirsch A., Ackermann K.-L., Neuendorf G., Nagel R.:** Neue Wege in der Implantatprothetik. Teamwork Interdisziplinär J Proth Zahnheilkd, 3. Jahrgang, 1/2000.
- **Krennmair G., Bukal J.:** Das symphyseale Einzelzahnimplantat zur Verankerung einer Unterkieferprothese beim betagten Patienten, Stomatologie Heft 6. Oktober 2000, Seite 155–159
- **Kuzmanovic D., Payne A., Purton D.:** Distal implant to modify teh Kennedy classification of a removable partial denture: A clinical report. THE JOURNAL OF PROSTHETIC DENTISTRY, VOLUME 92 NUMBER 1 (page 8–11)

L

- **Lecerf J.:** Spectrum Québec, Vol 5, No 3, Automne 2008
- **Liddelow G.J., Henry P.J.:** A prospective study of immediately loaded single implant-retained mandibular overdentures: Preliminary one year results, The Journal of Prosthetic Dentistry, Volume 97, June 2007 Issue 6, Page S126–137
- **Ludwig K., Hartfil H., Kern M.:** Untersuchung zum Verschleissverhalten von Kugelattachments, Quintessenz Zahntech 2005; 31, 10:1074–1083
- **Ludwig K., Hartfil H., Kern M.:** Analysis of the wear and tear of ball attachments, Quintessence journal of dental technology, Volume 4, Number 1, February 2006
- **Ludwig K., Hartfil H., Kern M.:** Analyse de l'usure et la rupture des attachements sphériques, alternativeS N°30, Quintessenz International / Mai 2006, p. 63 à 70
- **Ludwig K., Cretsi X., Kern M.:** In-Vitro-Untersuchung zu Abzugskräften von Kugelkopf-Attachments bei Implantatdivergenzen, Abstract anlässlich der Jahrestagung der DGZPW 2005, DZZ Sonderheft A76
- **Ludwig K., Cretsi X., Kern M.:** In-Vitro-Untersuchung zu Abzugskräften von Kugelkopf-Attachments bei Implantatdivergenzen, DZZ 61. Jahrgang, Heft 3 (2006) Seite 142–146

M

- **Marzola R., Scotti R., Fazi G., Schincaglia G.P.:** Immediate Loading of Two Implants Supporting a Ball Attachment-Retained Mandibular Overdenture: A Prospective Clinical Study. Clinical Implant Dentistry and Related Research, Volume 9, Number 3, 2007, Page 136–143
- **Mericske-Stern R.:** Die implantatgesicherte Totalprothese im zahnlosen Unterkiefer. Schweiz Monatsschr Zahnmed 98: 931–936, 1988
- **Mericske-Stern R., Geering A.H.:** Implantate in der Totalprothetik. Schweiz Monatsschr Zahnmed 98: 871–875, 1988
- **Mues S.:** Wiederherstellung von frakturierten Teleskopfeilern mittels Stiftaufbauten oder hybridprothetischer Verankerungselemente. Quintessenz Zahnmedizin 6/2008
- **Mues S., Bayer S., Mues A., Utz K.-U., Stark H.:** Prospektive Studie zur Wiederherstellung von abgebrochenen Teleskopfeilern mittels Stiftaufbauten oder Kugelankern, Deutsche Zahnärztliche Zeitschrift 61 (2006) 9, Seiten 484–488.

- **Mühlhauser A., Keweloh M.:** Kugelkopfanker mit Dalbo®-PLUS, Teil 1, dental-labor, LIV, Heft 11/2006, Seiten 1489–1504, Teil 2 Heft 12/2006, Seiten 1661–1664
- **Müller F., Rentsch A.:** Deckprothesen, Quintessenz ZM 02/2009, Seiten 191–199
- **Mundt T., Passia N., Att W., Heydecke G., Freitag-Wolf S., Luthardt R. G., Kappel S., Konstantinidis I.K., Stiesch M., Wolfart S., Kern M.:** Pain and discomfort following immediate and delayed loading by overdentures in the single mandibular implant study (SMIS), Clin Oral Invest, 2017

N

- **Naert I., Gizani S., Vuylsteke M., van Steenberghe D.:** A 5-year randomized clinical trial on the influence of splinted and unsplinted oral implants in the mandibular overdenture therapy. Clin Oral Impl Res 9: 170–177, 1998
- **Nothdurft F.P., Proson M., Spitzer W.J., Pospiech P.R.:** Implantatgetragene Versorgung eines ausgedehnten Resektionsdefektes der Maxilla, SSO Vol.118 9/2008, Seite 827–834
- **Nothdurft F.P., Proson M., Spitzer W.J., Pospiech P.R.:** Réhabilitation implantoportée d'une perte de substance importante suite à une résection partielle du maxillaire, SSO Vol.118 9/2008, Seite 835–842

P

- **Passia N., Att W., Freitag-Wolf S., Heydecke G., Von Königsmark V., Freifrau von Maltzahn N., Mundt T., Rädcl M., Schwindling F.S., Wolfart S., Kern M.:** Single mandibular implant study – denture satisfaction in the elderly, Journal of Oral Rehabilitation, 2017 44: Seiten 213–219
- **Passia N., Abou-Ayash S., Bender D., Fritzer E., Graf M., Kappel S., Konstantinidis I., Mundt T., Frfr. v. Maltzahn N., Wolfart S., Kern M.:** Single Mandibular Implant Study: Recruitment Considerations, The International Journal of Prosthodontics, Vol 30, Number 1, 2017

R

- **Richter E.-J.:** Implantate als zusätzliche strategische Pfeiler bei herausnehmbarem Zahnersatz – Ein Therapiekonzept, Implantologie 2003; 11/1: 39–60
- **Richter E.-J.:** Wann ist der richtige Zeitpunkt für Implantate, DZW-Spezial 4/04 (Seite 8-11) & zm (Zahnmedizin) 94, Nr. 12, 16.6.2004 (Seite 1554–1556)
- **Richter E.-J.:** Implants with Dalbo® stud anchors as replacements for critical, missing abutment teeth. Spectrum May/June 2005
- **Rignon-Bret C., Herbout B., Wulfman C.:** Implant Overdenture, using ball attachment: A preliminary report of a clinical trial
- **Rignon-Bret C., Descamp F., Cheron R., Chalach N.:** Solidarisation directe de l'attachement Dalbo®-PLUS: Quelle résine choisir? Poster Mai 2004
- **Rignon-Bret Ch., Wermuth W.:** Caractéristiques Techniques des principaux systèmes d'attachements en PACSI (Realites Cliniques Vol. 14 n° 2 2003 pp. 236–237)
- **Rignon-Bret C., Rignon-Bret J.-M.:** Implantat retained removable full lower denture / Prothèse amovible complet supra-implantaire mandibulaire, SPECTRUM IDS 2005, Page 70–72
- **Rignon-Bret C., Herbout B., Chéron R., Audoux C.:** Solidarisation direct des attachements en prothèse amovible: quelle résine choisir?, Stratégie prothétique février 2006, vol 6, n° 1
- **Rignon-Bret C., Wulfmann C., Bissery A., Hadida F., Renouard F.:** Immediate loading of implants with mandibular overdentures using ball attachments: One-year results of a prospective study. Poster 2007

S

- **Setz J., Hyung L.S., Engel E.:** Retention of prefabricated attachment for implant stabilized overdentures in the edentulous mandible: An in vitro study, The Journal of Prosthetic Dentistry, September 98, Seite 323–329
- **Steiner B.:** Karlsruher Konstruktion – Abnehmbare Brücke auf Implantaten, dental-labor, Lill, Heft 1/2005

T

- **Teubner E.:** Verankerungen von abnehmbaren Prothesen von A (Adhäsiv-Attachment) bis Z (Zest Anker), SSO, Vol. 119, 1/2009

V

- **Veasco B., Gonzalez G., Quevedo M., Fernandez M., Beica A.:** Influencia del paralelismo de los implantes en la retencion de los ataches de sobredentaduras implantosoportadas, RCOE 2008 Vol. 13

W

- **Welz T.:** Innovative Kugelattachments als Bereicherung des Behandlungskonzeptes in der Implantologie 6/99 Seite 20–21
- **Welz T.:** Neue Druckknopf-Varianten für enge Platzverhältnisse und die Implantologie, DZW-ZahnTechnik 4/99 Seite 32
- **Wermuth W.:** History Dr. Hans Dalla Bona, Dental Dialog Swiss edition 4/2007
- **Wermuth W., Serhan I., Louis JP.:** De Dalla Bona au Dalbo®-PLUS, Stratégie prothétique NR 5/Novembre 2008
- **Werner E.:** Hybridprothese mit elliptischer Matrice, dental dialogue 3/2006, Seite 84–91
- **Wiemeyer A.S., Agar J.R., Kazemi R.B.:** Orientation of retentive matrices on spherical attachments independent of implant parallelism, The Journal of Prosthetic Dentistry, Volume 86, Number 4, Seite 434–437
- **Wolf K., Ludwig K., Hartfil H., Kern M.:** Analysis of retention and wear of ball attachments, Quinessenz International May 2009
- **Wolfart S., Brunzel S., Braasch K., Kern M.:** Das mittige Einzelimplantat im zahnlosen Unterkiefer, implantologie 15; 2007, seite 195–204
- **Wulfmann C., Bissery A., Renouard F., Herbout B., Postaire M., Rignon-Bret C.:** Evaluation of patient satisfaction in a prospective clinical trial with an immediate-loading protocol of a mandibular overdenture. Poster 2007

Z

- **zt-aktuell:** Supraradikuläre, retentive Resilienzverankerung; Nr. 11 / November 2006, Seite 18

Last update: 2017